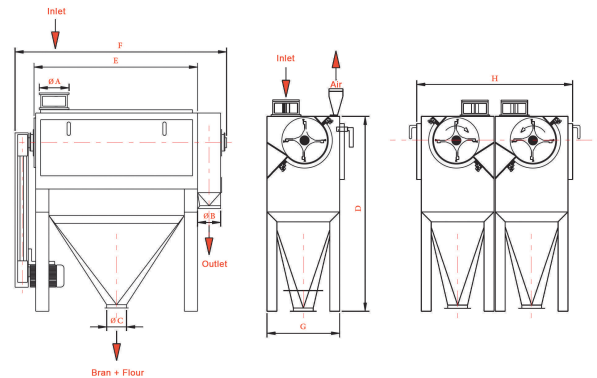
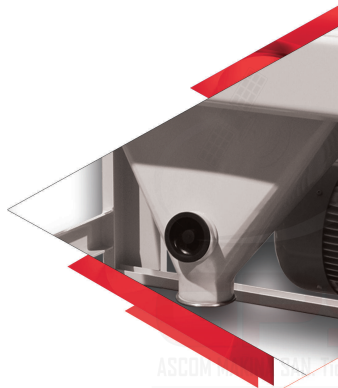


BRAN FINISHER GKLA

Bran Finisher used for extracting flour powder from the bran. Some flour powder stick and remain inside of the bran. This machine prevents flour loss and increasing the efficiency. Flour powder are stirred by the help of high speed rotating perforated cylinder inside a cylindrical filter, which is mounted to the machine body, then flour powder are throw out from the filter holes. Machine has two entrances from left and right, this provide easiness for assembly.



TYPE	DIMENSIONS (mm)								Sieve Dia.	Length	Capacity t/h	MOTOR			Air Need m ³ /min	Approx Weight Kg.		
GKLA	ØA	ØB	ØC	D	E	F	G	H			CEI Standard	Kw	Rpm	Net	Gross	Package m ³		
30/80/4	135	135	120	1200	1035	1313	458	1080	300	800	0,7	AGM 132 S4	4	1500	5	190	230	2,3
45/10/6.5	135	135	140	1440	1200	1670	550	1300	450	1100	1,8	AGM 132 S4	5,5	1500	7	325	455	2,3
45/110/7.5	135	135	140	1440	1200	1670	550	1300	450	1100	2,2	AGM 132 M4	7,5	1500	7	325	455	2,3

