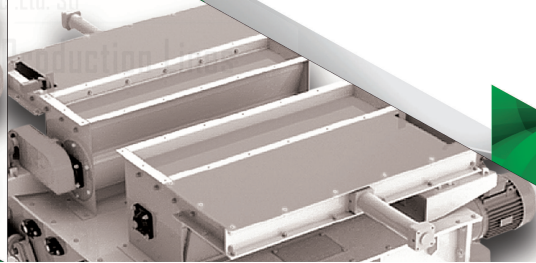
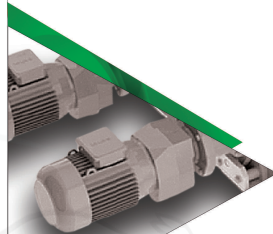
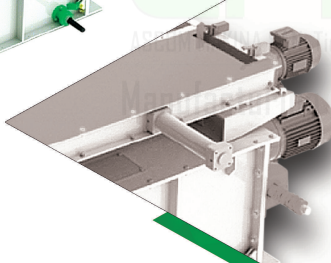
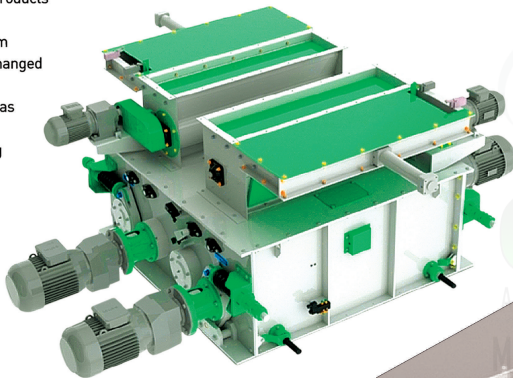


CRUMBLER FEEDER GGR

Body in steel construction
Available valve balls fixed with springs to crush products coming from top bunker
It is directly driven with motor by coupling system
Valve balls' piece, diameter and lenght can be changed as capacity
Valve gap can be mechanic/automatic arranged as desired size
Available sample receiving cover during working
Regularly feeding system
Crumbler can be inactive with by bass flap
Strong and flexible structure for impacts
Used to pellet breaking in 1mm-4 mm



MODEL	DIMENSIONS					MOTOR POWER	MOTOR QTY	VALVE QTY
	A	B	C	D	E			
GGR Ø200*800	2500	1000	475	875	800	3 Kw	2	2
GGR Ø200*1000	2570	1050	600	875	1250	4 Kw	2	2
GGR Ø300*1250	3000	2450	500	1005	1820	7,5 Kw	4	4
GGR Ø350*1500	3755	2460	540	1028	2430	15 Kw	4	4

