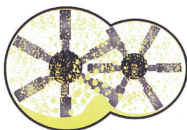
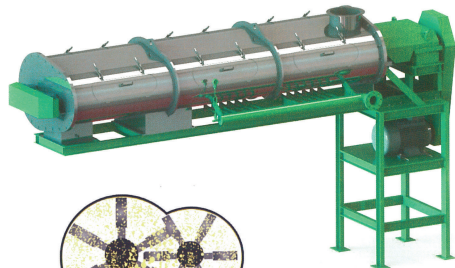
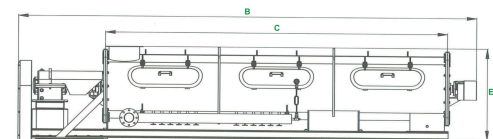
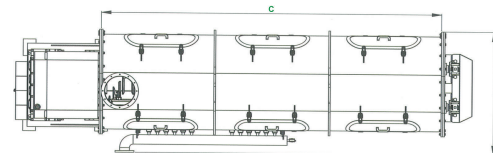
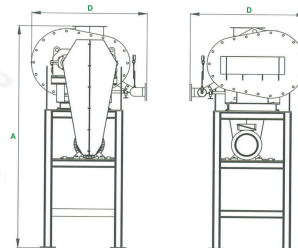


DOUBLE CONDITIONER GKN



Mixing capacity 30 t/h
Driven by 30 Kw motor.
Special designed reducer provides rotor revolution in different rotation and synchronization.
Body is produced in AISI 304 Stainless Material.
Bolt connected paddles for easy assembly / disassembly and calibration.
Large maintenance gates to easy access.
Feed retention time 90-120 sec.

Provide semi-finished product tempered by steam.
Available to add liquids as molasses, enzyme, etc. to conditioner. Increase feed, steam, liquid mixing quality via several body diameter and shaft speed. Retention time can be change with adjustable paddle angles. thus obtain gelatinisation of product starch under heat.



MODEL	DIMENSIONS					MOTOR POWER
	A	B	C	D	E	
GKN Ø670-Ø500×3300	3292	4448	3334	1371	1132	22 KW
GKN Ø760-Ø580×4000	2908	5237	4000	1522	1096	30 KW