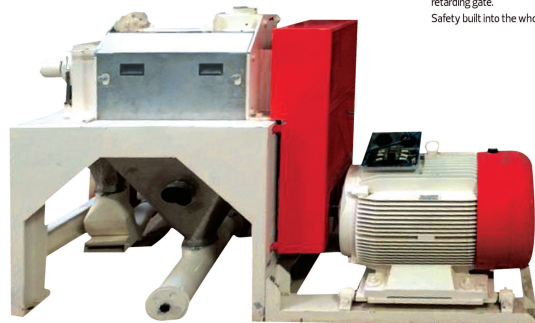


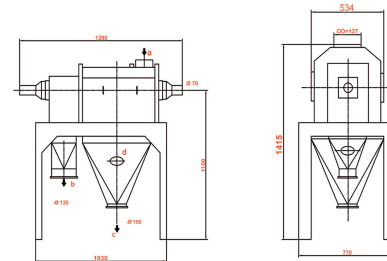
DWGERMINATOR GMCS 4



The conditioned maize is drawn in by special - corrugations and conveyed to the noduled section, where the maize kernels undergo intensive rubbing between the nodules arranged on the jacket and rotor.

The hulls, germs and attrition flour drop through the screens to the discharge hopper. The product tailing over the screens is virtually free of hulls, germ & flour. The degree of hulling can be controlled by adjusting the gap by setting the linear pressure with the spring on the retarding gate.

Safety built into the whole machine to avoid injury.



Type	CAPACITY T/H	Motor Power (kW) 4 POLE	RPM	Net weight	Wth seaworthy pack	Volume seaworthy pack
GMCS4	3-4,5	45-55	720	650 kg	750 kg	2.3 m³

- 1 - Corn
- 2 - Grits rough
- 3 - Grits middle
- 4 - Grits soft
- 5 - Germ
- 6 - Grits moisturizer
- 7 - Semolina
- 8 - Crust