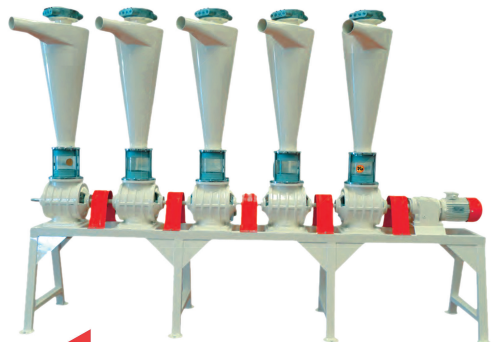
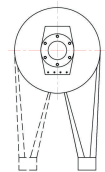


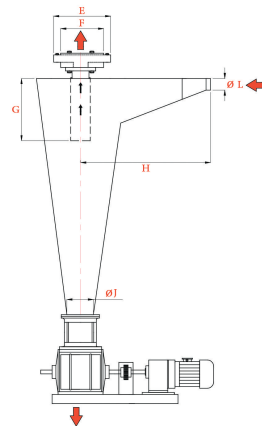
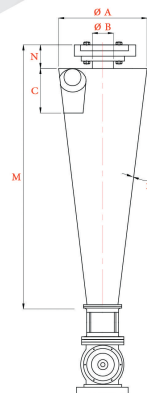
PNEUMATIC CYCLONE
GGXB



Generally, Cyclones used for deposition impurities from air, and used here to separate air and product. Used for different aims with respect to their body structure. By the help of aspirator and absorbed air, it decomposes the strange particles that entered into the cyclone. Air is set free over the cyclone and the strange materials unload from underside of the cyclone by the help of air lock.



Left Right



TYPE	DIMENSIONS (mm)														Approx Weight Kg.		
GGXB	ØA	ØB	C	D	E	F	G	H	ØJ	K	ØL	M	N	Net	Gross	Package m³	
160	160	55	60	32	110	85	100	320	145	40-45	50	800	60	8,5	9	0,05	
200	200	70	77	40	120	100	120	320	145	50-70	65	800	60	11	11,5	0,07	
240	240	85	95	48	145	125	140	450	145	60-85	75	800	60	14	14,5	0,11	
280	280	100	112	56	170	148	160	450	145	75-100	90	800	60	17	17,5	0,13	
340	340	120	133	68	195	172	180	475	145	85-120	110	800	60	20	21	0,18	
410	410	145	161	82	220	190	210	600	145	100-140	130	800	60	24	25	0,26	
500	500	180	203	100	250	225	280	700	145	130-170	160	800	60	31	32	0,38	

GPS-ASCOM